



The ICE

Proudly Presents

**The 8th Annual
North Georgia Classic**

**Basic Skills Competition
at**

**The ICE Complex
Cumming, GA**

August 12, 2018

**Snowplow Sam – Freeskate,
No Test – Preliminary, Dance, Adults,
Showcase, Interpretive, Jumps and Spins Challenge,
Therapeutic Skating**

Contact: Cheryl Faust: LTS@TheICE.info

The North Georgia Classic 2018

US Figure Skating Basic Skills Competition Information

Facility

All events will be held at The Ice, 1345 Atlanta Hwy, Cumming, GA 30040 (678)845-0103. Locker Rooms are available. For more facility information please see www.TheIce.info

ELIGIBILITY RULES FOR PARTICIPANTS

The competition is open to ALL skaters who are current eligible (ER 1.00) members of either the Basic Skills Program and/or are full members of U.S. Figure Skating. To be eligible, skaters must have submitted a membership application or be a member in good standing. Members of other organizations are eligible to compete but must be registered with the host Basic Skills Program/club or any other Basic Skills Program/club.

Eligibility will be based on skill level as of closing date of entries. All **Snowplow Sam and Basic Skills 1-pre freeskate** skaters must skate at highest level passed or one level higher and NO official U.S. Figure Skating tests may have been passed including MIF or individual dances.

For the **Free skate 1-6, Test Track and Well Balanced levels**, eligibility will be based only upon highest free skate test level passed (moves in the field test level will not determine skater's competitive level). Skaters may skate at highest level passed OR one level higher BUT not both levels in the same event during the same competition.

It is very important to the success of the competition that skaters are placed in the correct divisions. If, for whatever reason, the Local Organizing Committee discovers that a skater has been placed in a category that is below their class level, the chairman and referee will have the option to move the skater into the proper division, even if this has to be done the day of the competition. This will ensure that every event is as fair as possible to the competitors

ELIGIBILITY RULES FOR INSTRUCTORS/COACHES

If a coach/ instructor attempts to work at the North Georgia Winter Classic without the proper credentials, he or she is in violation of U.S. Figure Skating ethics and code of conduct rules and, as such, is subject to disciplinary action.

Entries

The North Georgia Classic is open to all skaters in good standing with U.S. Figure Skating and will be governed by the rules as specified in the 2015-2016 U.S. Figure Skating Rule Book, except as otherwise specified. **The entry fee is \$45 for the first figure skating event and \$20 for each additional figure skating event BEFORE JUNE 10. After JUNE 10 first event is \$65 and second event is \$20.** Online entry with secure credit card payment is available at www.theice.info. A 3.8% processing fee will apply. Online entry must be completed by midnight on **July 10, 2018**. Late

registrations may be accepted depending on availability. A late fee of \$25 will apply to all registrations after midnight on February 5, 2018.

Notification of competition and practice ice times will NOT be available by phone, mail, or email. Skater and Coaches schedules will be available via the web at www.entryeeze.com.

Please review your choice of events closely. Any change of event as a result of your mistake will result in a \$25 fee for each event changed. The Ice reserves the right to divide any event if necessary and to cancel any events (with full refund of entry fee.) Otherwise, there will be NO refunds. COACHES ARE RESPONSIBLE FOR APPROVING ALL OF THEIR SKATERS LEVELS ENTERED. ANY CHANGES MADE AFTER FEBRUARY 4 ARE SUBJECT TO A LATE FEE!

Refunds

Full refunds including practice ice, **minus the online processing fee**, are available if the skater withdraws prior to February 5, 2018. After February 5, 2018, entry refunds are only available if the competition is not held or there is a death in the competitor's immediate family. There will be NO medical refunds given. Please contact Cheryl Faust for refund information. The processing fee is not refundable for any reason.

Music

All competitors' music must be on a CD; re-recordable discs (CD-RW) will not be accepted. All CDs must be clearly marked with the skater's name and event. All CDs (only one piece of music per CD) must be turned in to the registration desk at least one (1) hour prior to the event. It is **advisable and recommended** to have a backup copy. CDs will be available for pick up at the registration desk after the event. While all possible care will be taken, The Ice assumes no responsibility or liability due to lost, damaged, or unclaimed music.

Registration

The registration desk will be open throughout the competition. Skaters must check in at least one hour prior to their event.

Admission

Spectator admission is free to all events.

Practice Ice

Practice Ice will be available for \$10 per 20 min session. Practice ice is available to purchase at the same time as registration online at entryeeze.com. About two weeks before the competition, we will assign the practice ice sessions that have been purchased according to events and levels. If there is any available practice ice on the date of the competition, you can purchase practice ice from the registration table for \$14.00 per session. There will be no refunds for unused sessions.

Video and Photography

There will be **NO** flash photography permitted in the ice arena.

Hotels

To be announced later.

Inquiries

Please contact Cheryl Faust LTS@TheICE.info

Competition Applications:

- Please go to EntryEeze.com and find the North Georgia Classic Logo
- You must register “new” to the competition and will then be given the opportunity to copy from a recent competition using their pin number from that competition.

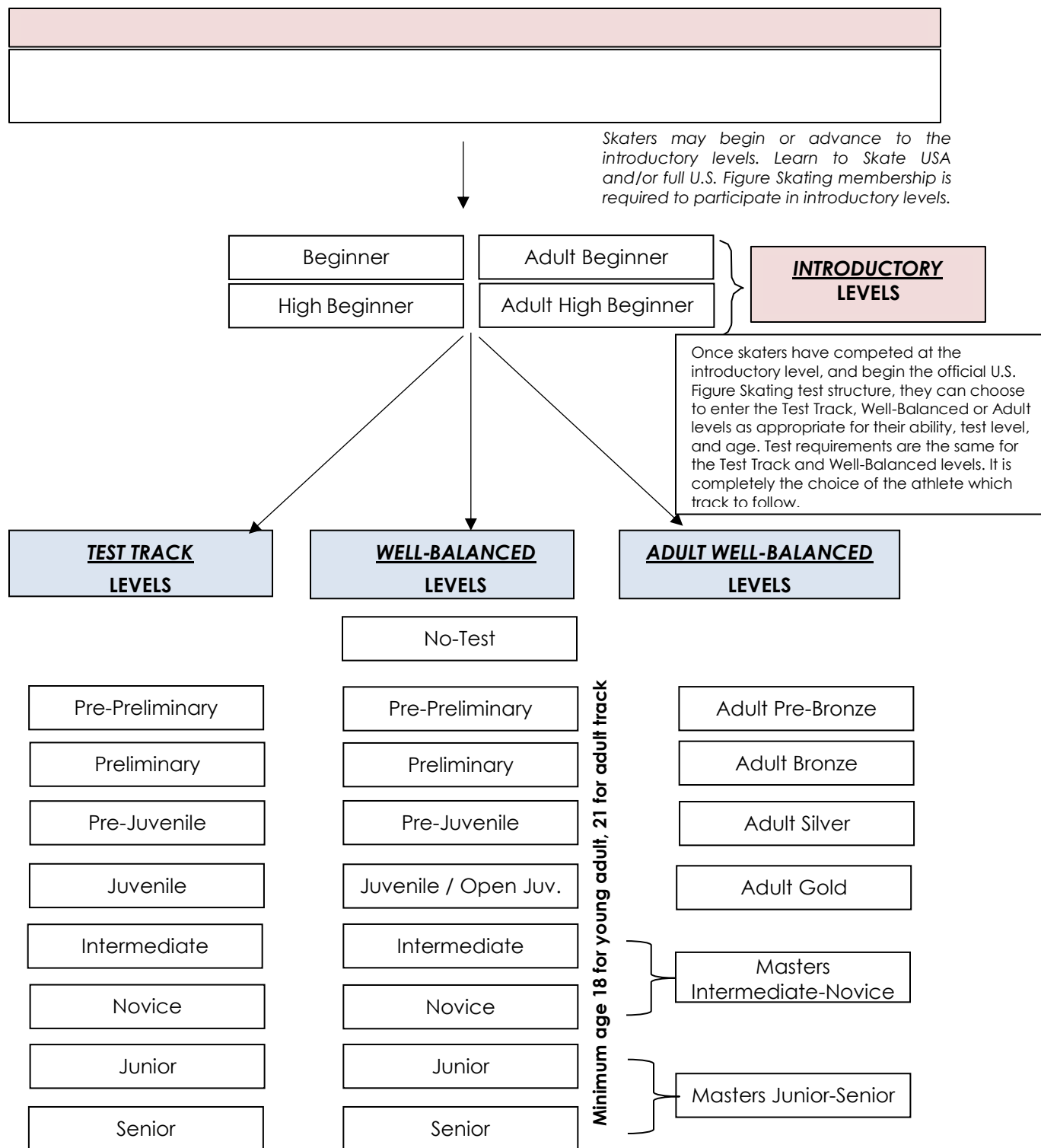
*****You will need to update skater profile in order to sign up for appropriate events****

YOU MUST BE A CURRENT MEMBER OF US FIGURE SKATING EITHER THROUGH A CLUB OR A LEARN TO SKATE USA PROGRAM

- Special Note: No Test skaters need to select “none” for test level
- Click on events you would like to enter
- Also make sure you purchase the amount of practice ice you would like
- Contact Cheryl Faust with questions LTS@TheICE.info

LEARN TO SKATE USA

Illustration of Singles Free Skating Events:



SNOWPLOW SAM – BASIC 6 ELEMENTS

Format choice of the host: Each skater will perform each element when directed by a judge or referee or have the option to perform one element at a time in the order listed below (no excessive connecting steps). Referee driven format examples: all skaters perform first element before moving on to the next and so on, or each skater performs all of the required elements before moving on to the next skater.

- To be skated on 1/3 to 1/2 ice.
- No music.
- **All elements must be skated in the order listed.**

Level	Time	Skating rules/standards
Snowplow Sam	1:00 max.	<ul style="list-style-type: none"> • March followed by a two-foot glide and dip • Forward two-foot swizzles, 2-3 in a row • Forward snowplow stop • Backward wiggles, 2-6 in a row
Basic 1	1:00 max.	<ul style="list-style-type: none"> • Forward two-foot glide and dip • Forward two-foot swizzles, 6-8 in a row • Beginning snowplow stop on two-feet or one-foot • Backward wiggles, 6-8 in a row
Basic 2	1:00 max.	<ul style="list-style-type: none"> • Forward one-foot glide, either foot • Scooter pushes, right and left foot, 2-3 each foot • Moving snowplow stop • Two-foot turn in place, forward to backward • Backward two-foot swizzles, 6-8 in a row
Basic 3	1:00 max.	<ul style="list-style-type: none"> • Beginning forward stroking showing correct use of blade • Forward ½ swizzle pumps on a circle, either clockwise or counter clockwise, 4-6 consecutive • Forward slalom • Beginning backward one-foot glide, either foot • Moving forward to backward two-foot turn on a circle
Basic 4	1:00 max.	<ul style="list-style-type: none"> • Backward one-foot glides, right and left • Forward outside edge on a circle, clockwise or counter clockwise • Forward crossovers, 4-6 consecutive, both directions • Beginning two-foot spin, maximum 2-4 revolutions • Backward ½ swizzle pumps on a circle, one direction only
Basic 5	1:00 max.	<ul style="list-style-type: none"> • Backward outside edge on a circle, clockwise or counterclockwise • Backward crossovers, 4-6 consecutive, both directions • Advanced two-foot spin, maximum 4-6 revolutions • Forward outside three-turn, right and left • Hockey stop
Basic 6	1:00 max.	<ul style="list-style-type: none"> • Forward inside three-turn, right and left • Bunny Hop • Forward spiral on a straight line, right or left • Beginning one-foot spin, 2-4 revolutions, optional free leg held position and entry • T-stop, right or left

SNOWPLOW SAM – BASIC 6 PROGRAM WITH MUSIC

Format: The skating order of the required elements is optional. The elements are not restricted as to the number of times the element is executed or length of glides, number of revolutions, etc., unless otherwise specified.

- To be skated on full ice.
- The skater may use elements from a previous level.
- A 0.2 deduction will be taken for each element performed from a higher level. Bonus skills from the same level or below are allowed but will not be judged elements.

Level	Time	Skating rules/standards
Snowplow Sam	1:10 max.	<ul style="list-style-type: none"> • March followed by a two-foot glide and dip • Forward two-foot swizzles, 2-3 in a row • Forward snowplow stop • Backward wiggles, 2-6 in a row
Basic 1	1:10 max.	<ul style="list-style-type: none"> • Forward two-foot glide and dip • Forward two-foot swizzles, 6-8 in a row • Beginning snowplow stop on two-feet or one-foot • Backward wiggles, 6-8 in a row
Basic 2	1:10 max.	<ul style="list-style-type: none"> • Forward one-foot glide, either foot • Scooter pushes, right and left foot, 2-3 each foot • Moving snowplow stop • Two-foot turn in place, forward to backward • Backward two-foot swizzles, 6-8 in a row
Basic 3	1:10 max.	<ul style="list-style-type: none"> • Beginning forward stroking showing correct use of blade • Forward ½ swizzle pumps on a circle, either clockwise or counter clockwise, 4-6 consecutive • Forward slalom • Beginning backward one-foot glide, either foot • Moving forward to backward two-foot turn on a circle
Basic 4	1:10 max.	<ul style="list-style-type: none"> • Backward one-foot glides, right and left • Forward outside edge on a circle, clockwise or counter clockwise • Forward crossovers, 4-6 consecutive, both directions • Beginning two-foot spin, maximum 2-4 revolutions • Backward ½ swizzle pumps on a circle, one direction only
Basic 5	1:10 max.	<ul style="list-style-type: none"> • Backward outside edge on a circle, clockwise or counterclockwise • Backward crossovers, 4-6 consecutive, both directions • Advanced two-foot spin, maximum 4-6 revolutions • Forward outside three-turn, right and left • Hockey stop
Basic 6	1:10 max.	<ul style="list-style-type: none"> • Forward inside three-turn, right and left • Bunny Hop • Forward spiral on a straight line, right or left • Beginning one-foot spin, 2-4 revolutions, optional free leg held position and entry • T-stop, right or left

PRE-FREE SKATE – FREE SKATE 6 COMPULSORY

Format: In simple program form, using a limited number of connecting steps, the skating order of the required elements is optional.

- To be skated on ½ ice.
- No music is allowed.
- The skater must demonstrate the required elements and may use any additional elements from previous levels. Bonus skills from the same level or below are allowed but will not be judged elements.
- A 0.2 deduction will be taken for each element performed from a higher level.
- Time: 1:15 maximum

Level	Time	Skating rules/standards
Pre-Free Skate	1:15 max	<ul style="list-style-type: none"> • Forward inside open Mohawk from a standstill position (R to L and L to R) • Two forward crossovers into a forward inside Mohawk, step down and cross behind, step into one backward crossover and step to a forward inside edge, clockwise and counterclockwise • One-foot upright spin, optional entry and free-foot position (minimum three revolutions) • Mazurka • Waltz jump
Free Skate 1	1:15 max.	<ul style="list-style-type: none"> • Forward power stroking, 4-6 consecutive strokes • Backward outside three-turns, right and left • Upright spin, entry from backward crossovers - minimum 4-6 revolutions • Toe loop • Half flip jump
Free Skate 2	1:15 max.	<ul style="list-style-type: none"> • Alternating forward outside and inside spirals on a continuous axis (2 sets) • Backward inside three-turns, right and left • Beginning back spin, up to two revolutions • Half Lutz • Salchow jump
Free Skate 3	1:15 max.	<ul style="list-style-type: none"> • Alternating Mohawk/crossover sequence, right to left and left to right • Waltz three-turns, clockwise and counterclockwise • Advanced back spin with free foot in crossed leg position, min 3 revs • Loop jump • Waltz jump/toe loop or Salchow/toe loop jump combination
Free Skate 4	1:15 max.	<ul style="list-style-type: none"> • Forward power 3's, 2-3 consecutive sets, right or left • Sit spin - minimum three revolutions • Half loop jump • Flip jump
Free Skate 5	1:15 max.	<ul style="list-style-type: none"> • Backward outside three-turn, Mohawk (backward power three-turn), both directions • Camel spin - minimum three revolutions • Waltz jump-loop jump combination • Lutz jump
Free Skate 6	1:15 max.	<ul style="list-style-type: none"> • Forward power pulls, right and left • Split jump or stag jump • Camel, sit spin combination - minimum of four revolutions total • Waltz jump, ½ loop, Salchow jump sequence • Beginning Axel jump

PRE-FREE SKATE – FREE SKATE 6 PROGRAM WITH MUSIC

Format: The skating order of the required elements is optional. The elements are not restricted as to the number of times an element is executed, length of glides, number of revolutions, etc., unless otherwise stated. Connecting steps and transitions should be demonstrated throughout the program.

- To be skated on full ice.
- The skater must demonstrate the required elements and may use but is not required to use any additional elements from previous levels. Bonus skills from the same level or below are allowed but will not be judged elements.
- A 0.2 deduction will be taken for each element performed from a higher level.
- Time 1:40 max.

Level	Time	Skating rules/standards
Pre-Free Skate	1:40 max	<ul style="list-style-type: none"> • Two forward crossovers into a forward inside Mohawk, step down and cross behind, step into one backward crossover and step to a forward inside edge, clockwise and counterclockwise • One-foot upright spin, optional entry and free-foot position (minimum three revolutions) • Mazurka • Waltz jump
Free Skate 1	1:40 max	<ul style="list-style-type: none"> • Forward power stroking, 4-6 consecutive strokes • Upright spin, entry from backward crossovers - minimum 4-6 revolutions • Toe loop jump • Half flip jump
Free Skate 2	1:40 max.	<ul style="list-style-type: none"> • Alternating forward outside and inside spirals on a continuous axis (2 sets) • Beginning back spin, up to two revolutions • Half Lutz • Salchow jump
Free Skate 3	1:40 max	<ul style="list-style-type: none"> • Alternating Mohawk/crossover sequence, right to left and left to right • Advanced back spin with free foot in crossed leg position, min 3 revs • Loop jump • Waltz jump-toe loop or Salchow-toe loop jump combination
Free Skate 4	1:40 max.	<ul style="list-style-type: none"> • Forward power 3's, 2-3 consecutive sets, right or left • Sit spin - minimum three revolutions • Half Loop jump • Flip jump
Free Skate 5	1:40 max.	<ul style="list-style-type: none"> • Backward outside three-turn, Mohawk (backward power three-turn), both directions • Camel spin - minimum three revolutions • Waltz-loop jump combination • Lutz jump
Free Skate 6	1:40 max.	<ul style="list-style-type: none"> • Split jump or stag jump • Camel, sit spin combination - minimum of four revolutions total • Waltz jump, ½ loop, Salchow jump sequence • Beginning Axel jump

INTRODUCTORY LEVELS COMPULSORY

Format: In simple program form, using a limited number of connecting steps, the skating order of the required elements is optional.

- To be skated on ½ ice.
- No music is allowed.
- The skater must demonstrate the required elements and may use any additional elements from previous levels.
- A 0.2 deduction will be taken for each element performed from a higher level.
- *Skaters may have the option to skate one level higher in compulsories than their free skate program.*

Level	Time	Skating rules/standards
Beginner	1:15 max.	<ul style="list-style-type: none"> • Waltz jump • ½ jump of choice • Forward two-foot or one-foot spin - minimum three revolutions (free leg position optional) • Forward or backward spiral
High Beginner	1:15 max.	<ul style="list-style-type: none"> • Toe loop jump • Salchow jump • Forward scratch spin - minimum three revolutions • Forward or backward spiral

INTRODUCTORY LEVELS FREE SKATE PROGRAM

General event parameters:

- Skaters will skate to the music of their choice.
- Level will be determined by the highest free skate test passed. Skaters may compete at the highest level they have passed, or skate up to one level higher.
- Minimum number of spin revolutions are in parentheses following the spin description. Revolutions must be in position.

Level	Jumps	Spins	Step Sequences
Beginner 1:40 Maximum	Max. 5 jump elements: <ul style="list-style-type: none"> • Jumps with no more than one-half rotation (front to back or back to front). • Max. 2 jump sequences • Max. 2 of any same jump 	Max. 2 spins: <ul style="list-style-type: none"> • Two upright spins, no change of foot, no flying entry (Min. 3 revolutions) 	Connecting moves and steps should be demonstrated throughout the program
High Beginner 1:40 Maximum	Max. 5 jump elements: <ul style="list-style-type: none"> • Jumps with no more than one-half rotation (front to back or back to front including half-loop) • Single rotation jumps: Salchow and toe loop only. • Max. 2 jump combinations or sequences • Max. 2 of any same type jump. 	Max. 2 spins: <ul style="list-style-type: none"> • Two upright spins, change of foot optional, no flying entry (Min. 3 revolutions) 	Connecting moves and steps should be demonstrated throughout the program

WELL BALANCED LEVELS COMPULSORY

General event parameters:

- Elements skated on ½ ice
- Elements may be performed only once
- No music is allowed

Level	Time	Skating rules/standards
No-Test	1:15 max.	<ul style="list-style-type: none"> • Loop jump • Jump combination to include a toe loop (may not use a loop or Axel) • Solo spin - sit <u>or</u> camel spin - minimum three revolutions • Spiral sequence, must include a forward and backward spiral. Additional spirals and balance moves may be included.
Pre-Preliminary	1:15 max.	<ul style="list-style-type: none"> • Toe Loop jump • Jump combination: single/single (no Axel) • Sit spin or camel spin - minimum three revolutions • Spiral sequence with one forward spiral and one backward spiral (any edge)
Preliminary	1:15 max.	<ul style="list-style-type: none"> • Lutz jump • Jump combination: single/single (may include Axel) • Back upright spin - minimum three revolutions • Forward inside spiral

WELL BALANCED FREE SKATE PROGRAM

General event parameters:

- Skaters may not enter both a Well Balanced Free Skate event and a Test Track Free Skate event at the same nonqualifying competition.
- Skaters will skate to the music of their choice.
- Level will be determined by the highest free skate test passed. Skaters may compete at the highest level they have passed, or skate up to one level higher.

Level	Time	Jumps	Spins	Step Sequences
No-Test	1:40 Maximum	Max 5 Jump Elements <ul style="list-style-type: none"> • All single jumps allowed except for the single Axel <ul style="list-style-type: none"> ○ No single Axels, double, triple or quadruple jumps allowed ○ Number of single jumps (except single Axels) is not limited provided the maximum number of jump elements allowed is not exceeded • Max 2 jump combinations or jump sequences <ul style="list-style-type: none"> ○ Jump combinations limited to 2 jumps except that one 3-jump combination with a maximum of 3 single jumps is allowed Jump sequences limited to a maximum of 3 single jumps	Max 2 Spins <ul style="list-style-type: none"> • Spins may change feet and/or position • Spins may start with a flying entry • Min 3 revs. These spins must be of a different character (For definition see U.S. Figure Skating rule 4103 (E))	Max 1 Sequence <ul style="list-style-type: none"> • Step Sequence <ul style="list-style-type: none"> ○ Must use one-half the ice surface ○ Moves in the field and spiral sequences are allowed but will not be counted as elements ○ Jumps may be included in the step sequence
Pre-Preliminary	1:40 Maximum	Max 5 Jump Elements <ul style="list-style-type: none"> • All single jumps, including the single Axel, allowed <ul style="list-style-type: none"> ○ No double, triple or quadruple jumps allowed ○ Axel may be repeated once as a solo jump or part of a jump sequence or jump combination (maximum of 2 single Axels) ○ Number of single jumps is not limited provided the maximum number of jump elements allowed is not exceeded • Max 2 jump combinations or jump sequences <ul style="list-style-type: none"> ○ Jump combinations limited to 2 jumps except that one 3-jump combination with a maximum of 3 single jumps is allowed <ul style="list-style-type: none"> • Jump sequences limited to a maximum of 3 single jumps 	Max 2 Spins <ul style="list-style-type: none"> • Spins may change feet and/or position • Spins may start with a flying entry • Min 3 revs. These spins must be of a different character (For definition see U.S. Figure Skating rule 4103 (E))	Max 1 Sequence <ul style="list-style-type: none"> • Step Sequence <ul style="list-style-type: none"> ○ Must use one-half the ice surface ○ Moves in the field and spiral sequences are allowed but will not be counted as elements ○ Jumps may be included in the step sequence
Preliminary	1:30 +/- 10 seconds	Max 5 Jump Elements <ul style="list-style-type: none"> • 1 must be an Axel-type jump or a waltz jump* • All single jumps, including the single Axel, allowed. Only 2 different double jumps may be attempted (limited to double Salchow, double toe loop and double loop) <ul style="list-style-type: none"> ○ Double flip, double Lutz, double Axel, triple and quadruple jumps not allowed ○ An Axel plus up to two different, allowable double jumps may be repeated once (but not more) as solo jumps or part of a jump sequence or jump combination ○ Number of single jumps is not limited provided the maximum number of jump elements allowed is not exceeded • Max 2 jump combinations or sequences <ul style="list-style-type: none"> ○ Jump combinations limited to 2 jumps except that one three jump combination with a maximum of 2 double jumps and 1 single jump is allowed <ul style="list-style-type: none"> • Jump sequences limited to a maximum of 3 single or double jumps 	Max 2 Spins <ul style="list-style-type: none"> • Spins may change feet and/or position • Spins may start with a flying entry • Min 3 revs. These spins must be of a different character (For definition see U.S. Figure Skating rule 4103 (E))	Max 1 Sequence <ul style="list-style-type: none"> • Step Sequence <ul style="list-style-type: none"> ○ Must use one-half the ice surface ○ Moves in the field and spiral sequences are allowed but will not be counted as elements ○ Jumps may be included in the step sequence

TEST TRACK FREE SKATE

General event parameters:

- Skaters may not enter both a Well Balanced Free Skate event and a Test Track Free Skate event at the same nonqualifying competition.
- Skaters will skate to the music of their choice.
- Level will be determined by the highest free skate test passed. Skaters may compete at the highest level they have passed, or “skate up” to one level higher.
- Minimum number of spin revolutions are in () following the spin description. Revolutions must be in position.
- The following deductions will be taken:
 - 0.1 from each mark for each technical element included that is not permitted in the event description.
 - 0.2 from the technical mark for each extra element included.
 - 0.1 from the technical mark for any spin that is less than the required minimum revolutions.

Level	Jumps	Spins	Step Sequences
Pre-Preliminary 1:40 maximum	<p><i>Maximum of 5 jump elements:</i></p> <ul style="list-style-type: none"> • Jumps with not more than one-half rotation (<i>front to back or back to front including half-loop</i>) • Single rotation jumps: Salchow, toe loop and loop only. • Max. 2 jump combinations or sequences • Max. 2 of any same type jump 	<p><i>Maximum of 2 spins:</i></p> <ul style="list-style-type: none"> • Two spins of a different nature, one position only. No change of foot, no flying entry. (Min. 3 revolutions) 	Connecting moves and steps should be demonstrated throughout the program
Preliminary 1:30 +/- 10 sec.	<p><i>Maximum of 5 jump elements:</i></p> <ul style="list-style-type: none"> • Jumps with not more than one rotation (no Axels). • Max. 2 jump combinations or sequences • Max. 2 of any same type jump 	<p><i>Maximum of 2 spins:</i></p> <ul style="list-style-type: none"> • One spin in one position; no change of foot, no flying entry. (Min. 3 revolutions) <p>One spin consisting of a front scratch to back scratch; exit on spinning foot not mandatory. (Min. 3 revolutions per foot)</p>	Connecting moves and steps should be demonstrated throughout the program

ADULT 1-6, INTRODUCTORY-BRONZE COMPULSORY

General event parameters:

- The skating order of the elements is optional.
- Element may only be attempted once
- To be skated in program format with limited connecting steps
- To be skated on ½ ice
- A 0.2 deduction will be taken for each element MISSING, REPEATED or from a higher level

Level	Time	Elements
Adult 1	1:30 MAX	<ul style="list-style-type: none"> • Forward Marching • Forward two-foot glide • Forward swizzle (4-6 in a row) • Forward snowplow stop – two feet or one foot
Adult 2	1:30 MAX	<ul style="list-style-type: none"> • Forward skating across the width of the ice • Forward one-foot glides • Forward slalom • Backward skating • Backward swizzles, 4-6 in a row
Adult 3	1:30 MAX	<ul style="list-style-type: none"> • Forward stroking using the blade properly • Forward half-swizzle pumps on the circle, 6 to 8 in a row, clockwise and counterclockwise • Forward chasses on a circle, clockwise and counterclockwise • Backward skating to a long two-foot glide • Backward snowplow stop, Right and Left
Adult 4	1:30 MAX	<ul style="list-style-type: none"> • Forward outside edge on a circle, right and left • Forward inside edge on a circle, right and left • Forward crossovers, clockwise and counterclockwise • Hockey stop, both directions • Backward one-foot glides, right and left
Adult 5	1:30 MAX	<ul style="list-style-type: none"> • Backward outside edge on a circle, right and left • Backward inside edge on a circle, right and left • Backward crossovers, clockwise and counterclockwise • Forward outside three-turn, right and left • Beginning two-foot spin (min 2 revs)
Adult 6	1:30 MAX	<ul style="list-style-type: none"> • Forward stroking with crossover end patterns • Backward stroking with crossover end patterns • Forward inside three-turn, right and left • T-stop • Lunge • Two-foot spin into one-foot spin (min 2 revs on 1 foot)
Adult Beginner	1:30 MAX	<ul style="list-style-type: none"> • Bunny hop or mazurka • Forward beginning one-foot spin from backward crossovers (min 2 revs) • Forward moving inside open Mohawk (right and left) – heel to instep • Alternating right and left forward outside edges across the width of the ice • Alternating right and left forward inside edges across the width of the ice • Backward moving outside 3-turn right and left
Adult High Beginner	1:30 MAX	<ul style="list-style-type: none"> • Waltz Jump • ½ Flip • Alternating right and left backward outside edges across the width of the ice • Alternating right and left backward inside edges across the width of the ice • Backward moving inside 3-turn right and left
Adult Pre-Bronze	1:30 MAX	<ul style="list-style-type: none"> • Two forward crossovers into a forward inside Mohawk, step down and cross behind, step into one backward crossover and step to a forward inside edge, clockwise and counterclockwise • Jump combination or sequence consisting of only ½ revolution jumps (half loop is considered a full revolution jump) – maximum of 2 jumps in combination and 3 jumps in a sequence • Forward upright spin (Min. 3 revolutions) • Forward spiral (any edge)
Adult Bronze	1:30 MAX	<ul style="list-style-type: none"> • Single Salchow • Waltz jump – toe loop combination jump • Backward Upright Spin – entry optional (Min. 3 revolutions) • Spiral sequence (Min. 2 spirals)

ADULT 1-6 PROGRAM WITH MUSIC

General event parameters:

- The skating order of the required elements is optional.
- The elements are not restricted to the number of times element is executed, or length of glides, number of revolutions, etc. unless otherwise stated. Connecting moves and steps should be demonstrated throughout the program.
- To be skated on full ice
- The skater must demonstrate the required elements and may use, but is not required to use, any additional elements from previous (lower) levels.
- A 0.2 deduction will be taken for each required element MISSING and for those elements performed from a higher level.

Level	Time	Elements
Adult 1	1:40 MAX	<ul style="list-style-type: none"> • Forward Marching • Forward two-foot glide • Forward swizzle (4-6 in a row) • Forward snowplow stop – two feet or one foot
Adult 2	1:40 MAX	<ul style="list-style-type: none"> • Forward skating across the width of the ice • Forward one-foot glides • Forward slalom • Backward skating • Backward swizzles, 4-6 in a row
Adult 3	1:40 MAX	<ul style="list-style-type: none"> • Forward stroking using the blade properly • Forward half-swizzle pumps on the circle, 6 to 8 in a row, clockwise and counterclockwise • Backward skating to a long two-foot glide • Forward chases on a circle, clockwise and counterclockwise • Backward snowplow stop, Right and Left
Adult 4	1:40 MAX	<ul style="list-style-type: none"> • Forward outside edge on a circle, right and left • Forward inside edge on a circle, right and left • Forward crossovers, clockwise and counterclockwise • Backward one-foot glides, right and left • Hockey stop, both directions
Adult 5	1:40 MAX	<ul style="list-style-type: none"> • Backward outside edge on a circle, right and left • Backward inside edge on a circle, right and left • Backward crossovers, clockwise and counterclockwise • Forward outside three-turn, right and left • Beginning two-foot spin
Adult 6	1:40 MAX	<ul style="list-style-type: none"> • Forward stroking with crossover end patterns • Backward stroking with crossover end patterns • Forward inside three-turn, right and left • T-stop • Lunge • Two-foot spin into one-foot spin (min 2 revs on 1 foot)

ADULT INTRODUCTORY – BRONZE FREE SKATE PROGRAM

General event parameters:

- Skaters will skate to the music of their choice and vocal music is allowed
- To be skated on full ice
- The minimum number of required spin revolutions is indicated in parentheses following the spin description. Revolutions must be in position.

Level	Jumps	Spins	Step Sequences	Qualifications
Adult Beginner 1:40 Maximum	Max. 4 jump elements <ul style="list-style-type: none"> • Jumps limited to bunny hop, mazurka, or ballet • Max 1 combination or sequence consisting of only the allowed listed jumps • Max. 2 of any same jump 	Max. 2 spins <ul style="list-style-type: none"> • Two forward upright spins, no change of foot, no flying entry (Min. 3 revolutions) 	Connecting moves and steps should be demonstrated throughout the program	Skaters may not have passed tests higher than U.S. Figure Skating Learn to Skate USA Free Skate 1 Badge Test
Adult High Beginner 1:40 Maximum	Max 4 jump elements: <ul style="list-style-type: none"> • Jumps limited to bunny hop, mazurka, ballet, stag, split, waltz, ½ flip • Max 1 combination or sequence consisting of only the allowed listed jumps • Max. 2 of any same type jump. 	Max 2 spins: <ul style="list-style-type: none"> • Two upright spins, change of foot optional, no flying entry (Min. 3 revolutions) 	Connecting moves and steps should be demonstrated throughout the program	Skaters may not have passed tests higher than U.S. Figure Skating Learn to Skate USA Free Skate 1 Badge Test
Adult Pre-Bronze 1:40 Maximum	Max 4 Jump Elements: <ul style="list-style-type: none"> • Jump combinations and sequences are optional, but no more than 2 combinations or sequences may be included • 1 jump combination/sequence may consist of three jumps, and the other may have only two jumps. • Each jump may be repeated only once and only as part of a combination or sequence (maximum of 2 of any jump) • Only single and half-revolution jumps are allowed • No single Lutz, single Axel or double jumps are allowed 	Max 2 Spins: <ul style="list-style-type: none"> • Min 3 revs • Spins with a flying entry are not permitted 	Connecting steps throughout the program are required	Skaters may not have passed tests higher than U.S. Figure Skating Adult Pre-Bronze Free Skate
Adult Bronze 1:50 maximum	Max 4 Jump Elements: <ul style="list-style-type: none"> • Max 2 combinations or sequences; • 1 combination/sequence may consist of three jumps, and the other may have only two jumps • Each jump may be repeated only once, and only as part of a combination or sequence (maximum of 2 of any jump) • All single jumps are permitted (except single Axel) • No single Axel, double or triple jumps are permitted 	Max 2 Spins: <ul style="list-style-type: none"> • Spins must be of different character (for definition, see U.S. Figure Skating rule 4103 (E)) • Min 3 revs total if no change of foot • Min 3 revs each foot if change of foot • Min 2 revs in each position • No flying spins are permitted 	Max 1 Sequence: <ul style="list-style-type: none"> • Choreographic Step Sequence Must use at least ½ ice surface	Skaters may not have passed tests higher than U.S. Figure Skating Adult Bronze Free Skate

SHOWCASE EVENTS

Showcase events are open to skaters in Basic, Free Skate, Limited Beginner through Preliminary and Adult Bronze. Groups will be divided by number of entries and ages if possible. Skaters must enter at the same level as their free skate event or highest test level of skater's in the group ensemble or production number. If a free skate event is not being entered, skaters must enter at their current test level or one level higher. Vocal music is permitted.

Show costumes are permitted, as long as they do not touch or drag on the ice. Props and scenery must be placed and removed by unaided singles and duet competitors within one minute and by unaided ensemble contestants within two minutes for setup and two minutes for removal. A 0.2 deduction will be assessed by the referee against each judge's mark for each five seconds in excess of the time allowed for the performance, for handling props and scenery and for scenery assistance.

Performances will be judged from an entertainment standpoint, for theatrical qualities. Technical skating skills and difficulty will not be rewarded as such; however, skating must be the major element of the performance and be of sufficient quality to support the selected theatrical elements. Unintended falls, poorly executed skating elements and obvious losses of control will reduce contestant's marks. Jump difficulty is not rewarded in showcase; therefore jumps, if choreographed, should be performed with style, flow and confidence. Theatrical elements evaluated will include energy, poise, acting, pantomime, eye contact, choreography, form/extension and the use of props and ice.

6.0 Judging will be used. Deductions will be made for skaters including technical elements not permitted in the event description.

* For specific guidelines regarding the conduct of Showcase competitions, refer to the Nonqualifying Showcase Guidelines posted on www.usfigureskating.org.

Showcase categories may include:

- Levels can be subdivided, if necessary, depending on entry numbers and event set up
- Dramatic entertainment: Showcase program utilizing intense emotional skating quality to depict choreographic theme.
- Light entertainment: Showcase program emphasizing such choreographic expressive qualities such as comedy, love and mime while incorporating skating skills.
- Duets: Theatrical/artistic performances by any competitors.
- Mini production ensembles: Theatrical performances by three to seven competitors.
- Production ensembles: Theatrical performances by eight to 30 skaters. Theater On Ice teams are eligible as production ensembles. NOTE: Skaters may enter only one each duet, mini production or production event.

LEVEL	ELEMENTS	QUALIFICATIONS	PROGRAM LENGTH
Basic 1-6	Elements only from Basic 1-6 curriculum	May not have passed any higher than Basic 6 level.	Time: 1:00 max.
Pre-Free Skate-Free Skate 6/ Beginner/High Beginner/ Adult 1-6	3 jump maximum. ½ rotation jumps only, plus the following full rotation jumps: Salchow and toe loop.	May not have passed any official U.S. Figure Skating free skate tests.	Time: 1:30 max.
No Test/ Pre-Preliminary/ Adult Pre-Bronze	3 jump maximum. No Axels or double jumps permitted.	Must have passed no higher than U.S. Figure Skating Pre-Preliminary or Adult pre-Bronze free skate test.	Time: 1:30 max.
Preliminary/ Adult Bronze	3 jump maximum. Axels are permitted, but no double jumps allowed.	Must have passed no higher than U.S. Figure Skating Preliminary free skate or Adult Bronze test.	Time: 1:40 max.

INTERPRETIVE

Competition Format

The Organizing Committee must pre-select and edit musical choices appropriate for these events. During the warm-up, skaters will hear the selection of music twice. Following the warm-up, all skaters except for the first skater will be escorted to a soundproof locker room or another area of the arena. The first skater will hear the music one more time and then perform a program to the music. As each skater performs, the next skater in line will be allowed to hear the music for the third time before they perform to the music. The listening skater will not be allowed to view the performing skater.

Levels: Levels should be broken by ability with ages divided appropriately.

Judging Rules: Skaters are judged on originality, pattern, technical (the ability to include jumps and spins) and music interpretation/expression.

Spins and jumps performed must be appropriate to competition level.

Time: Music Duration: Pre-Free Skate - No Test: 1:00 Max

Pre-Preliminary - Preliminary: 1:00 Max

Coaching: There is to be no instruction allowed during this event from coaches, parents, or fellow skaters. Staging area must be kept clear except for ice monitor and listening competitor.

SPINS CHALLENGE

General event parameters:

- Spins may be skated in any order. Connecting steps are allowed, but will not be taken into consideration in scoring. Spins may not be repeated. Only required elements may be included.
- All events are skated on ½ ice.
- Minimum number of revolutions are noted in parentheses.

Level	Time	Skating rules / standards
Beginner	1:30 max.	Upright one-foot spin (3) Upright two-foot spin (3) Sit spin (3)
High Beginner	1:30 max.	Upright one-foot spin (3) Upright two-foot spin (3) Sit spin (3)
No Test	1:30 max.	Upright one-foot spin (3) Upright two-foot spin (3) Sit spin (3)
Pre – Preliminary	1:30 max.	Upright one-foot spin (3) Upright back-scratch spin (3) Sit spin (3)
Preliminary	1:30 max.	Forward scratch to back scratch spin (3) Combination spin with no change of foot (4) Sit spin (3)

JUMPS CHALLENGE

General event parameters:

- Each jump may be attempted twice; the best attempt will be counted.
- To be skated on ½ ice

Level	Time	Skating rules / standards
Beginner	1:15 max.	<ol style="list-style-type: none"> 1. Waltz jump (from backward crossovers) 2. ½ flip or ½ Lutz 3. Single Salchow
High Beginner	1:15 max.	<ol style="list-style-type: none"> 1. Waltz jump (from backward crossovers) 2. Single Salchow 3. Jump combination – Waltz jump-toe loop
No Test	1:15 max.	<ol style="list-style-type: none"> 1. Single toe loop 2. Single loop 3. Jump combination – Any two ½ or single revolution jumps (no Axel)
Pre – Preliminary	1:15 max.	<ol style="list-style-type: none"> 1. Single toe loop 2. Single flip 3. Jump combination - Any two ½ or single revolution jumps (no Axel)
Preliminary	1:15 max.	<ol style="list-style-type: none"> 1. Single flip 2. Single Lutz 3. Jump combination – Any single jump + single loop (may be Axel)

SOLO PATTERN DANCE

General event parameters:

- Levels are based upon the skaters' highest pattern dance test passed.
- A solo pattern dance competition event will consist of the skater performing two solo pattern dances.
- The patterns to be skated depend upon which quarter of the year the competition is held. The skater will perform the two pattern dances listed for his/her level, based upon the date of the competition. If the competition falls over two quarters (for example, June 30th – July 2nd), the dance will be selected based on the start date of the competition listed in the announcement (in this example, the 2nd quarter).
- Skaters will complete both of the dances at each level. Dances will be scheduled at the discretion of the Chief Referee for each competition and may be competed consecutively or with a break in-between pattern dances groupings.

Level	July 1 st – September 30 th
Preliminary	<ol style="list-style-type: none"> 1. Canasta Tango 2. Rhythm Blues
Pre-Bronze	<ol style="list-style-type: none"> 1. Cha-Cha 2. Fiesta Tango

THERAPEUTIC SKATING 2-14

Competition hosts can use the skills listed below to create either a elements or program event for Special Olympics competitors. If doing a program, music can be used and will be 1:10 max.

Therapeutic 2 – ON ICE

- A. Stand on ice
- B. Fall and stand up
- C. Knee dip in place
- D. March forward 10 steps

Therapeutic 3

- A. Three swizzles standing still
- B. March forward 10 steps
- C. Forward two-foot glide
- D. Backward wiggle and march assisted

Therapeutic 4

- A. Backward wiggle or march
- B. Five forward swizzles
- C. Forward skating
- D. Forward gliding dip

Therapeutic 5

- A. Backward two-foot glide
- B. Two-foot jump in place
- C. One-foot snowplow stop, R or L
- D. Forward one-foot glide

Therapeutic 6

- A. Forward stroking across the rink
- B. Five backward swizzles
- C. forward two-foot curves
- D. Two-foot turn front to back standing still

Therapeutic 7

- A. Gliding forward to backward two-foot turn
- B. Five forward one-foot swizzles, R or L
- C. Backward one-foot glide, R or L
- D. Forward pivot

Therapeutic 8

- A. Backward stroking across the rink
- B. Gliding backward to forward two-foot turn
- C. T-stop R or L
- D. Forward two-foot turn on a circle, R and L

Therapeutic 9

- A. Forward outside edge on a circle
- B. Forward inside edge on a circle
- C. Five forward crossovers
- D. Five backward half swizzles, R or L

Therapeutic 10

- A. Forward outside three-turn, R and L
- B. Forward lunge or shoot the duck
- C. Back outside edge on a circle, R and L
- D. Back inside edge on a circle, R and L

Therapeutic 11

- A. Forward inside three-turn, R and L
- B. Five backward crossovers, R and L
- C. Hockey stop
- D. Two-foot spin

Therapeutic 12

- A. Two forward outside edges
- B. Two forward inside edges
- C. Forward Mohawk, R and L
- D. Forward spiral

Therapeutic 13

- A. Backward outside edges
- B. Two backward inside edges
- C. Two-foot to one-foot spin
- D. Side toe hop, R or L

Therapeutic 14

- A. One-foot spin
- B. Forward crossover inside Mohawk backward crossover step forward
- C. Backward crossovers to a back outside edge
- D. Waltz jump from a standing or moving position

